

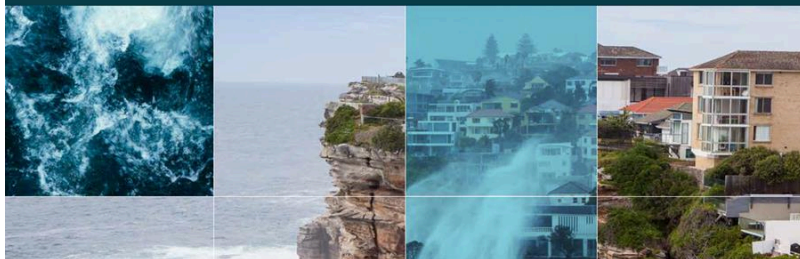
NARcliM2.0 is here. Get the local level information you can trust on climate change.



AdaptNSW

NARcliM2.0 is here. Get the local level information you can trust on climate change.

August 2024



AdaptNSW. Helping NSW adapt to climate change

Hello there,

We're excited to release the latest, most powerful climate projections for NSW delivered through the NSW and Australian Regional Climate Modelling (NARcliM) project.

The release of NARcliM2.0 delivers NSW's most powerful, up-to-date, and scientifically robust climate change projections.

Available at a 4km 'suburb scale' for south-east Australia covering all of NSW, ACT, VIC, and parts of SA, QLD, and NT (previously 10km) and 20km scale over Australasia (previously 50km), the updated set of climate projections are among the most detailed climate projections available in the country. This generation features a low (SSP1-2.6) and high (SSP3-7.0) global emissions scenario aligned with the Intergovernmental Panel on Climate Change's Shared Socio-economic Pathways (SSP).

The projections will provide critical information to support NSW Government agencies, businesses and

local decision-makers to make informed decisions about climate variation and extremes into the future.

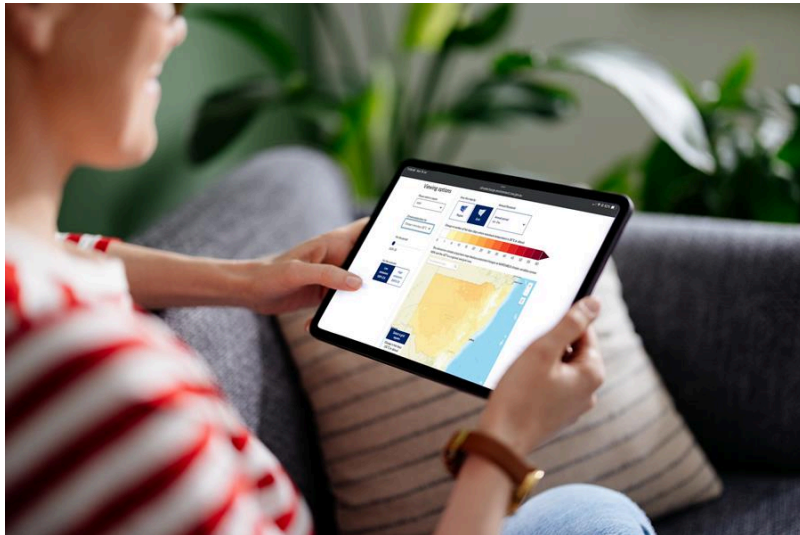
About NARClIM2.0

Latest data shows climate change in NSW in greater detail

NARClIM2.0 regional climate projections show that average temperatures in NSW will continue to warm throughout the century. By 2100, the data suggests that NSW can expect fewer cold nights, increased average temperatures, more hot days 35°C and above and more severe fire weather days. Check out the updated [interactive climate change projections map](#) and the [regional climate change snapshots](#) to learn more.

New resources to launch

As part of the launch of NARClIM2.0, the [AdaptNSW website](#) has been updated to include high level guidance on [how NARClIM works](#) and the [findings of NARClIM2.0](#). It also houses the [interactive climate change projections map](#) and the [regional climate change snapshots](#). [Additional resources and tools](#) are also available from the website including videos, case studies and infographics.



Re-launch of the interactive climate change projections map

You can now visualise NARClIM2.0 data through the updated interactive climate change projections map. First launched in 2014, the map now features several

enhancements to provide greater visibility and improved access to the projected changes in climate in NSW and across different regions for 7 climate variables. This information can be viewed by seasons or annually, and for 2 CMIP6 Shared Socio-economic Pathways (SSPs): SSP1-2.6 (low-emissions) and SSP3-7.0 (high-emissions). The interactive map provides our skilled end-users with data ready to be used in GIS/mapping applications. Learn more about these changes by checking out the map FAQs.

View the interactive climate change projections map

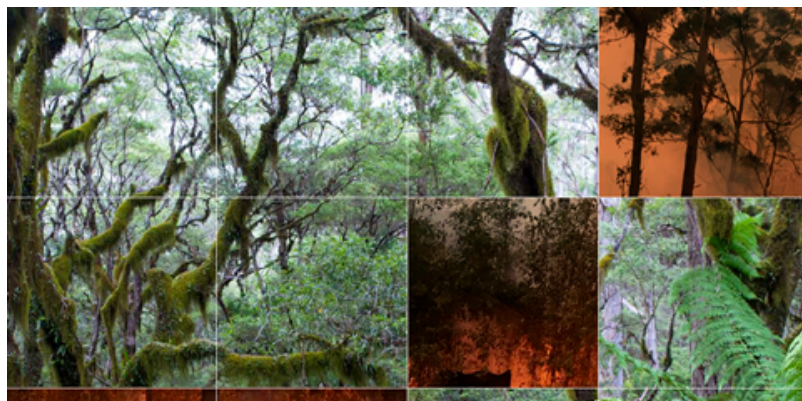
New regional climate change snapshots

To find out how climate change will affect your area between now and 2100, a new suite of regional climate change snapshots is available for NSW, the ACT and 10 NSW regions. Updated for NARClIM2.0, the snapshots contain information on changes in temperature, rainfall, severe fire weather plus sea level rise, for a high and low-emissions scenario. Find out how climate change will impact your region.

Visit regional climate change snapshots

NARClIM project is the trusted source of climate projections for NSW

Discover the robust NARClIM data development process and how NARClIM can support your work.



Get the big picture on NARClIM2.0

[Learn more](#)



View climate change in your region

[Learn more](#)

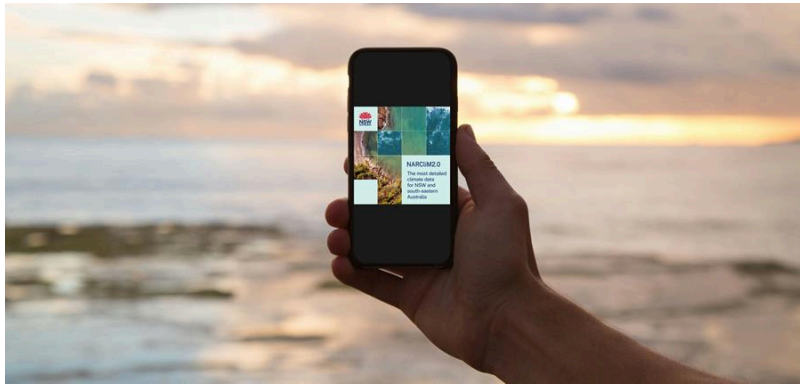


Discover resources

[Learn more](#)

AdaptNSW Forum 2024 is coming.

[Register today](#)



Help spread the news of NARClIM2.0

Download NARClIM2.0 tile

Forward this email to a friend



Mental health support

If you're feeling anxious about climate change, our page on [navigating eco-anxiety](#) is a useful resource to

help understand the emotions you're feeling, and take action.

[Forward](#)

Our mailing address is: Locked Bag 5022 Parramatta 2124

We sent you this email as a customer of the Department of Climate Change, Energy, the Environment and Water. If this email was sent to you in error, you can unsubscribe below. Take a look at our [privacy policy](#)

[Preferences](#) | [Unsubscribe](#)